

TradeRoute HL Series Legal for Trade On-board Weighing System



920i On-board Weigh Center



Single Assembly



Double Assembly

APPROVALS



Measurement
Canada
Approved

STANDARD FEATURES: SYSTEM

Legal For Trade Onboard System Includes

- 3 or 4 point on-board system RL2000B load cell with 20 ft cable, IP67
- 80 ft conduit cable
- Magnetic transport alarm sensor with 15 ft cable
- JB4SS junction box
- Hydraulic line locks and hoses
- 920i® On-board Weigh Center

Hydraulic pump not included

Minimum 3,000 PSI recommended to maintain 2200 PSI during lift

920i On-board Weigh Center:

- TMU 295 printer with splash shield
- Pre-installed 30 ft power cable
- Pre-installed 30 ft load cell cable
- Pre-installed Inclinator
- Transport alarm LEDs
- Power switch
- Start/End switch
- Waterproof enclosure
- Vibration mounts

Mounting bracket to body not included

920i USB Universal with On-board Software:

- RS-232 port
- Standard on-board software
- USB interface board only

USB Interface Functions:

- Available upon special request using a Type A sealed connector
- USB interface card on Port 2
- Supports weigh mode and configuration mode functions
- Supports upload of databases and 920 configuration file
- Supports download of databases, 920 configuration file, iRite, COD file, and firmware file
- Sanity checks for command errors
- Create STD database files

Flash Drives:

- Supports USB 2.0
- Create sub directories by unit ID and database name
- Use the root directory for generic files

Approvals:

- NTEP CC 99-091
- Measurement Canada AM-4847

TradeRoute HL Series Legal for Trade On-board Weighing System**SPECIFICATIONS: 920i® USB INDICATOR****Power:**

Line voltages: 115 or 230VAC, 9-36VDC,
+/- 6, 25 Watt input
Frequency: 50 or 60 Hz
Power consumption: 340 mA, maximum @ 115VAC
(26W) 240 mA @ 230VAC (26W)

Excitation Voltage:

10 ± VDC, 16 x 350 Ω or 32 x 700 Ω load cells
per A/D card

Analog Signal Input Range:

-10 mV to +45 mV

Analog Signal Sensitivity:

0.3 μV/graduation minimum @ 7.5 Hz
1.0 μV/graduation typical @ 120 Hz
4.0 μV/graduation typical @ 960 Hz

A/D Sample Rate:

7.5 to 960 Hz, software selectable

Resolution:

Internal resolution: 8 million counts
Weight display resolution: 9,999,999

System Linearity:

± 0.01% full scale

Digital I/O:

Six I/O channels on CPU board; optional 24-channel
I/O expansion boards available

Circuit Protection:

RFI, EMI, ESD protection

Serial Ports:

Four ports on CPU board support up to
115,200 bps; optional dual-channel serial expansion
boards available

Port 1: Full duplex RS-232

Port 2: USB Type A and Type B connectors

Port 3: Full duplex RS-232, 20 mA output

Port 4: Full duplex RS-232, 2-wire RS-485,
20 mA output

Display (W x H):

4.6 in x 3.4 in (116 W x 86 mm H), 320 x 240 pixel
VGA Liquid Crystal Display (LCD) module with
adjustable contrast

Keyboard:

27-key membrane panel, tactile feel
Legal: 14°F to 104°F (-10°C to +40°C)
Industrial: 14°F to 122°F (-10°C to +50°C)

Weight:

45 lb, weigh center

Rating/Material:

NEMA 4X/IP66, stainless steel

Warranty:

Two-year limited warranty

Indicator Approvals:

NTEP CC 01-088, Class III/IIIL 10,000d
Measurement Canada AM-5426, Class III/III HD
10,000d
OIML UK 2658, 6,000/10,000
CE marked
UL & C-UL listed (Universal, Deep and Wall Mount
Enclosure)

SPECIFICATIONS: TM U295 PRINTER**Print Speed:**

1.9 to 2.3 lines per second (5 x 7 character,
3 dot line spacing)

Column Capacity:

35/42 columns

Characters Per Line:

35 standard font

Print Area:

2.59 in W (65.8 mm W)

Character Formation:

5 x 7 and 7 x 7 dot matrix

Character Height:

0.11 standard font

Print Head Life:

Approximately 100 million strokes/pin

Form Thickness:

Single-ply - 0.003 in to 0.009 in
(0.08 to 0.23 mm)
Copy paper - 0.003 in to 0.014 in
(0.08 to 0.36 mm)

Ribbon:

Cassette-type purple ribbon. Ribbon life
is approximately 1.5 million characters
(continuous prints). Black ink also available.

Approvals:

UL listed, CSA certified, CE marked

Warranty:

One-year limited warranty
(includes print head)

SPECIFICATIONS: JB4SS JUNCTION BOX**Cable Fittings:****P/N 88956:**

(4) PG7 0.118-0.255 strain relief
(2) PG11 0.197-0.394 strain relief
(1) Prevent™ breather vent

P/N 107700:

(4) PG9 0.138-0.315 strain relief
(2) PG11 0.197-0.394 strain relief
(1) Prevent™ breather vent

Enclosure:

Stainless Steel NEMA 4X

Connectors:

Spring clamp screwless, 12-28 AWG

Trimming:

Individual cell, signal trim, ranges zero trim
12.49 k-100 k ohms with 2.49 k ohms isolation
resistors

Potentiometers:

100 k ohm, 25 turn cermet

Circuit Board:

3.8 in. x 2.3 in. (96.5 mm x 58.4 mm), with conformal
coating

Warranty:

One-year limited warranty

SPECIFICATIONS: RL2000B S-BEAM LOAD CELL**Full Scale Output:**

3.0 mV/V

Output Resistance:

350 ohms, +/- 3

Input Resistance:

385 ohms, +/- 5

Material/Finish:

High-alloy steel, nickel plated

Temperature:

Compensated range
14°F to 104°F/-10°C to 40°C

Seal Type:

Environmentally sealed, IP67

Safe Overload:

150% Full scale

Rated Excitation:

10V DC (15V maximum)

Nonlinearity:

0.03% Full scale

Hysteresis:

0.02% Full scale

Insulation Resistance:

5000 megohms

Cable Length:

20'/6.1 m

Cable Diameter:

.200 polyurethane jacket

Cable Color Code:

Red+ Excitation
Black.....- Excitation
Green.....+ Signal
White- Signal

Warranty:

Two-year limited warranty

Approvals:

FM approved
NTEP approved
CE marked

TradeRoute HL Series Legal for Trade On-board Weighing System

ON-BOARD WEIGHING

PART NUMBER/PRICE - COMPLETE SYSTEM

PART #	DESCRIPTION	PRICE
131098	15,000 lb x 5 lb/8,000 x 2 kg 3-point on-board system (Class III), qty 1 each OB5-SGL5, OB10-DBL5, 920i® weigh center	Consult
131099	20,000 lb x 5 lb/10,000 x 2 kg 4-point on-board system (Class III/IIIL), qty 2 OB10-DBL5, qty 1, 920i weigh center	Consult
131100	30,000 lb x 10 lb/15,000 x 5 kg 3-point on-board system (Class III), qty 1 each OB10-SGL10, OB20-DBL10, 920i weigh center	Consult
131101	40,000 lb x 10 lb/20,000 x 5 kg 4-point on-board system (Class III) qty 2 OB20-DBL10 qty 1, 920i weigh center	Consult
131102	20,000 x 5 kg 3-point on-board system (Class III) qty 1 each, OB15-SGL105, OB30-DBL15, 920i weigh center	Consult
131103	60,000 lb x 10 lb/30,000 x 5 kg 4-point on-board system (Class III/IIILD) qty 2, OB30-DBL15, qty 1, 920i weigh center	Consult

Other capacities available via specials request, reference NTEP and Canadian Weights & Measurements CC number

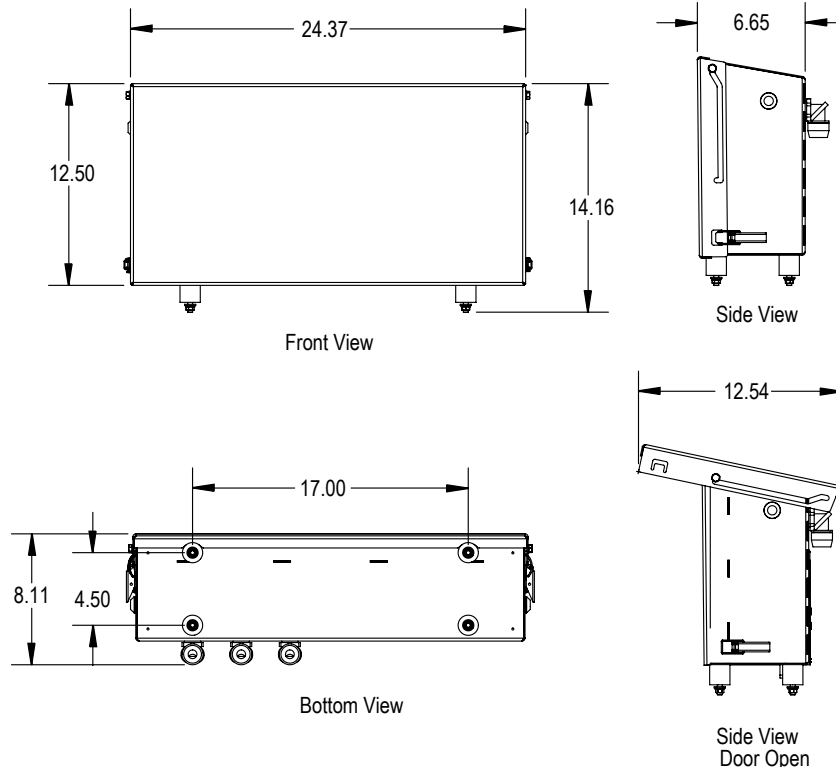
PART NUMBER/PRICE - SYSTEM COMPONENTS

PART #	MODEL #	DESCRIPTION	PRICE
131442	—	Electronics package includes: indicator, Epson® Ticket Printer, 25 ft load cell cable, power cable, housing, vibration mounts for installation to customer supplied mounting bracket	Consult
131811	—	Optional LED cab alarm, 35 ft	Consult
15494	EL146HE	4 conductor hostile environment load cell cable	Consult
88956	JB4SS	JB4SS signal trim j-box with PG37 cord grips	Consult
128123	—	Conduit, 1/2 in non metallic liquid tight polytuf	Consult
128670	OB5-SGL5	Low profile 5 K single assembly	Consult
128666	OB10-DLB5	Low profile 10 K double assembly	Consult
127956	OB10-SGL10	Low profile 10 K single assembly	Consult
127958	OB20-DBL10	Low profile 20 K double assembly	Consult
127957	OB15-SGL15	Low profile 15 K single assembly	Consult
127959	OB30-DBL15	Low profile 30 K double assembly	Consult
130107	Packaging	Double/Double packaging	Consult

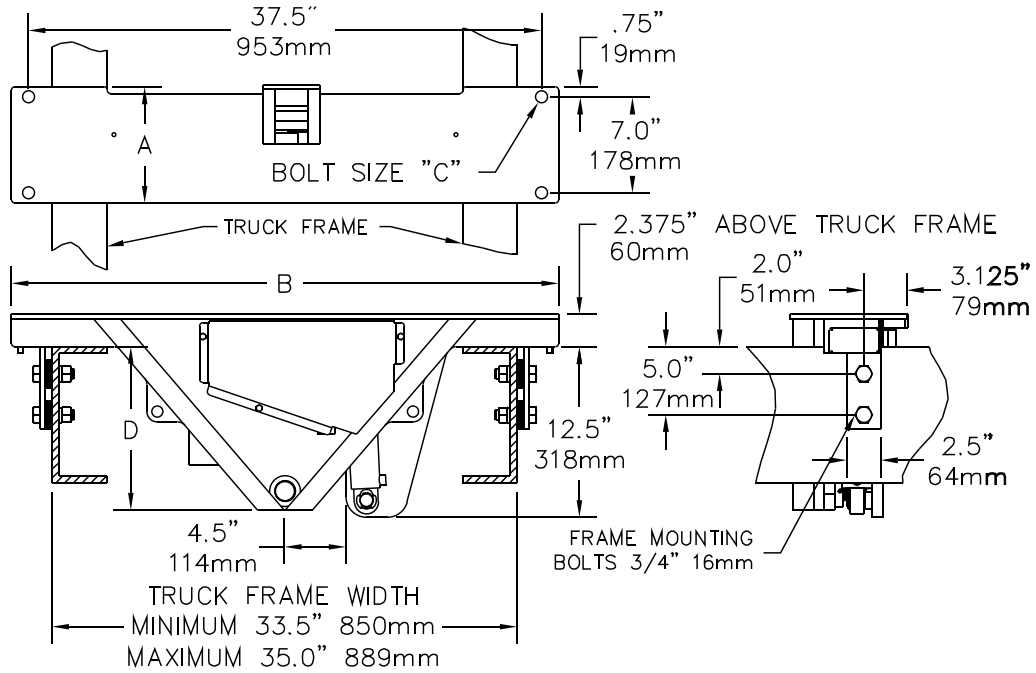
Note: Hydraulic pump, connect to your existing hydraulic pump with a maximum pressure of 3,000 PSI with a minimum flow of 5 GPM for best performance of lifting speed

Note: In cab weigh center available upon specials request

920i® WEIGH CENTER DIMENSIONS



LOW PROFILE - SINGLE ASSEMBLY (SGL), 5k and 10k



LOW PROFILE - DOUBLE ASSEMBLY (DBL), 5K and 10K

