

Avery Weigh-Tronix

A guide for shippers to aid compliance with the Safety of Life at Sea (SOLAS) container weight verification amendments.



SOLAS

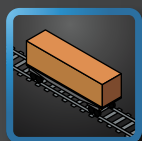
Shipper's Guide

What Are You Weighing?

Avery Weigh-Tronix

I Am Weighing The Packed Container

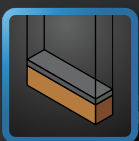
METHOD 1: Weighing the packed container using calibrated and certified equipment.



**Rail
Transporters**



**Hauliers &
Freight
Forwarders**



Ports



I Am Weighing The Component Parts

METHOD 2: Weighing all packages and cargo items, including packing materials and the tare weight of the container, then adding the sum of all weights together to provide a verified weight.



Manufacturers



Packers



Consolidators



Exporters



SOLAS: What the Changes Mean for You

Changes to the SOLAS shipping treaty mean all shipping container weights must be properly verified by an approved method of weighing. Avery Weigh-Tronix have designed this simple guide to help you understand the method and equipment available to achieve compliance.

Container weight verifications can be achieved in two ways. Either method requires that your scales be maintained and calibrated on a regular basis to ensure weighing accuracy.





WEIGHBRIDGE/TRUCK SCALE

- › In/out weighing
- › Avoid overloading penalties
- › Maximise vehicle capacity and fuel efficiency
- › Legal-for-trade weighing of entire vehicle



AXLE WEIGHING

- › Static and in-motion weighing
- › Avoid overloading and uneven loads
- › Improve compliance and health and safety



TRAIN WEIGHING

- › Static or in-motion weighing of rail cars or wagons
- › Easily installed on existing track
- › Monitor and record deliveries into and out of site



CONTAINER JACKS

- › Attach, weigh and pack away in under 5 minutes
- › Confirm load distribution and share weight data instantly
- › 50kg resolution/division size



FORKLIFT SCALE

- › Extremely robust, compact weighing solution
- › No need to stop and unload at a scale
- › Real time data acquisition and transfer via wireless



FLOOR & BENCH SCALE

- › Ideal at goods in/out
- › Weighs at very high accuracy
- › Floor scale with optional ramps for drive on capability

Who does the new regulation amendments affect?

The SOLAS regulation amendments have effects throughout the supply chain, meaning that shippers, freight forwarders, vessel operators, and terminal operators will all need to establish policies and procedures to ensure the implementation of this regulatory change. The shipper (or by arrangement of the shipper, a third party) has a responsibility to verify the gross mass of the container. The 'shipper' is the person whose name appears on the bill of lading or the transport document and will be legally responsible for the declaration of the Verified Gross Mass (VGM) of the loaded container.

Sales

Avery Weigh-Tronix can provide a wide range of equipment to ensure your business is meeting SOLAS weighing compliance. Our solutions range from bench and platform scales to container jacks and truck scales for road or rail, all of which can be linked to data management solutions to help you accurately record the VGM of your shipments.

Service

As part of the SOLAS regulation amendment, there is a requirement for all weighing equipment used to be maintained and calibrated. Throughout our network of Avery Weigh-Tronix dealers, distributors and businesses, we have an extended team of trusted and reliable service technicians who are available to install and maintain your equipment and provide regular calibration, servicing and repair. Highly trained service technicians will work with you to identify potential issues before they arise to ensure that your equipment is running reliably and accurately. We will ensure that your equipment is both accurate and compliant.

More online

Download our free guide:
*SOLAS – A Guide to Container
Weighing Regulations* at:

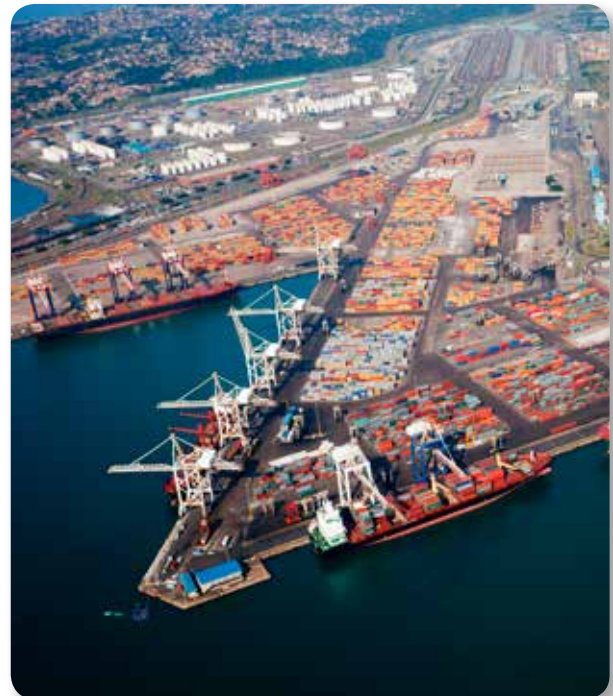
<http://www.averyweigh-tronix.com/solas>



About Avery Weigh-Tronix

Avery Weigh-Tronix is one of the world's leading suppliers of weighing solutions. With over 250 years of experience, the company designs, manufactures, installs and services a broad range of high quality industrial products and weighing systems.

Avery Weigh-Tronix is a member of the International Cargo Handling Coordination Association (ICHCA).



Standard Scale & Supply Company
25421 Glendale Avenue
Redford, MI 48239 USA
313-255-6700
www.standardscale.com

Avery Weigh-Tronix

www.averyweigh-tronix.com

Avery Weigh-Tronix is an ITW company



Avery Weigh-Tronix is a trademark of the Illinois Tool Works group of companies whose ultimate parent company is Illinois Tool Works Inc ("Illinois Tool Works"). Copyright © 2016 Illinois Tool Works. All rights reserved. This publication is issued to provide outline information only and may not be regarded as a representation relating to the products or services concerned. This publication was correct at the time of going to print, however Avery Weigh-Tronix reserves the right to alter without notice the specification, design, price or conditions of supply of any product or service at any time.

SOLAS-Shippers-Guide_L_RoW_501575.indd
V1 AWT35-501575