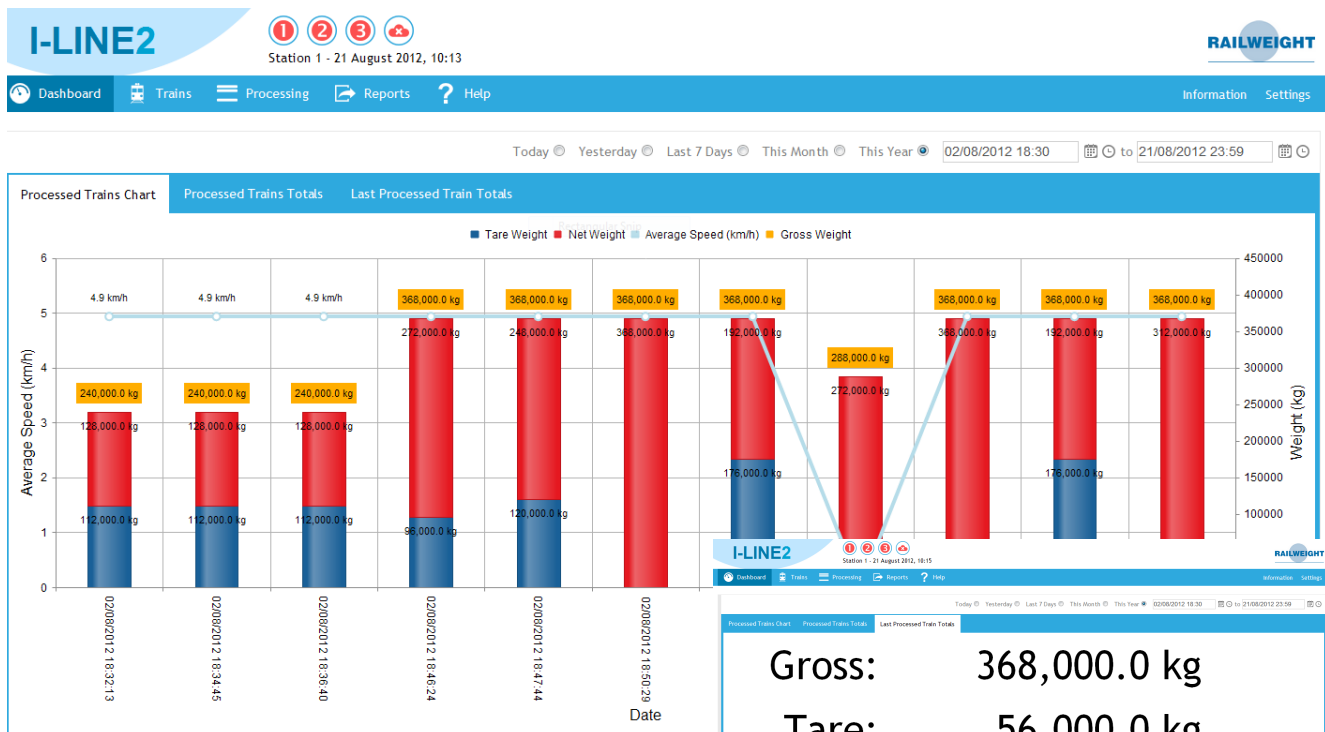


# I-LINE2

advanced train weighing systems



I-LINE2 is browser based train weight management software purpose designed to provide an information interface for the Railweight Weighline and Streamline train weighing solutions.



## Description

I-LINE2 displays or prints train weight data as it is captured by Weighline or Streamline weighing systems. The user friendly interface provides a quick visual representation of data for fast on-screen analysis, as well as more in depth processing capabilities and the ability to share data across multiple locations.

The simple to use browser based interface enables the processing and reporting of weight information to be completed quickly and simply.

I-LINE2 can be used for tare, gross and tare/gross/net weighing systems producing reports for each stage of the weighing operation.

Attention can be drawn to overloads and over-speeds as well as imbalances between bogies, axles and wheels, so at a glance the user can identify problems and take corrective actions.

Weight information can be presented in tabular and graphical format and also exported in .XML format for use by third party management systems.

All measurements are retained within the system and can be archived for data storage efficiency.

## Key Features

- Operates in tare, gross and net weighing modes.
- Automatically incorporates train identification numbers (via AVI/RFID).
- Allows manual entry of vehicle data if required.
- Allows manual entry of any other information you wish to associate with a weight (up to three user definable fields)
- Allows for manual, semi-automatic and fully-automatic operation.
- All train data is retained and may be displayed or printed whenever it is needed.
- Automatic printing of reports on events, such as when a train is weighed.
- Automatic alerting and reporting by email or SMS on certain events (subject to setup).
- Reporting framework allows custom reports as requirements change.
- Support for multiple client devices (subject to setup).
- Support for multiple weighing instruments.
- Support for IP camera feeds to be integrated into the Instrument Control Panel (subject to setup).
- Additional services for data backup and synchronisation to cloud storage facilities.
- Fully translatable into most languages

I-LINE2 Wagon Settings

Identifier	Dir.	Start	End	Weight	Complete	All OK	Matched
02/08/2012 19:27:52_31810	In	02/08/2012 07:18:06	02/08/2012 07:18:06	120,000 kg	●	●	2 of 8
02/08/2012 19:25:52_31810	Out	02/08/2012 06:55:51	02/08/2012 06:55:51	368,000 kg	●	●	12 of 12
02/08/2012 19:24:25_53662	Out	02/08/2012 06:55:51	02/08/2012 06:55:51	368,000 kg	●	●	12 of 12
02/08/2012 19:23:35_61766	In	02/08/2012 06:55:51	02/08/2012 06:55:51	120,000 kg	●	●	2 of 8
02/08/2012 19:22:37_2979	In	02/08/2012 06:55:50	02/08/2012 06:55:50	120,000 kg	●	●	7 of 8
02/08/2012 19:21:42_46681	In	02/08/2012 06:50:46	02/08/2012 06:50:46	120,000 kg	●	●	8 of 8
02/08/2012 19:18:11_37286	Out	02/08/2012 06:48:21	02/08/2012 06:48:21	368,000 kg	●	●	0 of 12
02/08/2012 19:01:45_9204	Out	02/08/2012 06:45:33	02/08/2012 19:01:45		●	●	1 of 10
02/08/2012 19:00:19_29015	Out	02/08/2012 06:45:33	02/08/2012 06:45:33	368,000 kg	●	●	12 of 12
02/08/2012 18:55:39_41419	In	02/08/2012 06:45:32	02/08/2012 06:45:32	120,000 kg	●	●	8 of 8
02/08/2012 18:54:28_50653	In	02/08/2012 06:45:32	02/08/2012 18:54:28		●	●	5 of 5
02/08/2012 18:50:29_64400	Out	02/08/2012 06:45:31	02/08/2012 06:45:31	368,000 kg	●	●	0 of 12
02/08/2012 18:47:44_19568	Out	02/08/2012 06:45:31	02/08/2012 06:45:31	368,000 kg	●	●	8 of 12

**Standard Scale & Supply Company**  
**25421 Glendale Avenue**  
**Redford, MI 48239**  
**313-255-6700**  
**www.standardscale.com**



© Avery Weigh-Tronix group of companies 2012. All rights reserved.  
 Railweight is a trading name of Avery Weigh-Tronix Limited.  
 Registered office: Foundry Lane, Smethwick, West Midlands B66 2LP

Registered in England No. 595129